



PREMIUM
QUARTZ SURFACES

 caesarstone®

PREMIUM QUARTZ SURFACES

The international brand Caesarstone was founded in Israel in 1987 and has since earned the right to be called legendary.

Since developing the world's first quartz countertop, Caesarstone has been uncompromising in quality, natural composition, proprietary textures, and manufacturing according to the Italian Breton technology.

Due to its high performance, quartz is successfully used all over the world for kitchen countertops, food preparation areas, bathroom vanities, flooring, stairs, and window-sills.



Durable



Guarantee protected



Scratch-resistant



Dirt-repellent



Easy to clean



Original decors

WORLD ENVIRONMENTAL STANDARD

One of the most essential advantages is that Caesarstone slabs are environmentally friendly. Caesarstone complies with hygienic and ecological safety standards for humans and the environment.

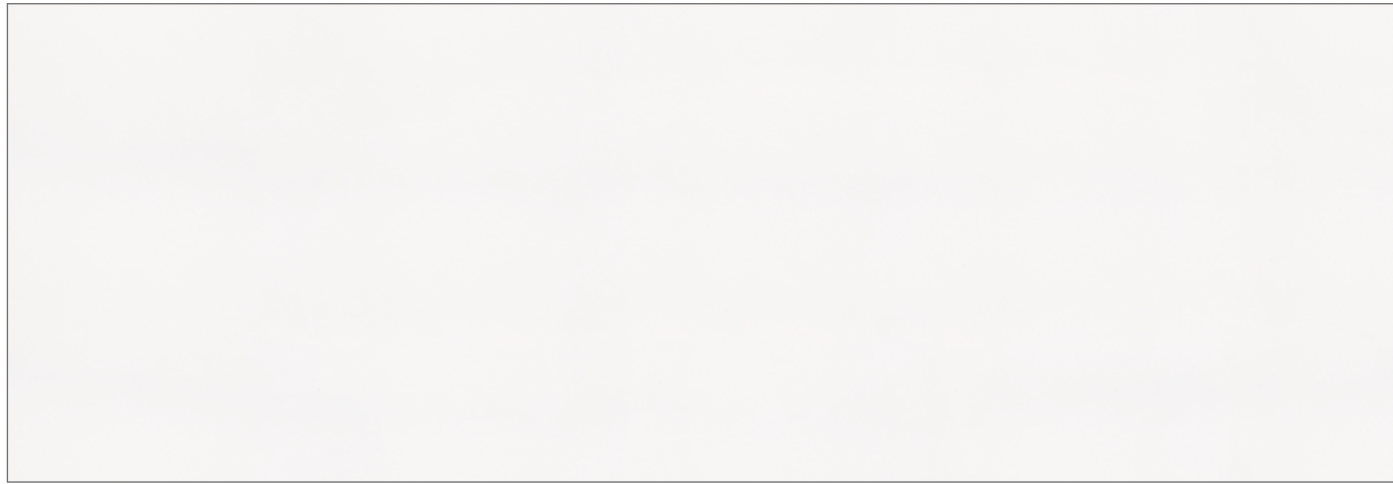


CAESARSTONE IS THE CHOICE OF STRONG, DEMANDING PEOPLE WHO KNOW THE ORIGINALS' PRODUCT VALUE.

5820 Darcrest

1141 Pure White

3050x1440 mm ± 20 mm | polished surface



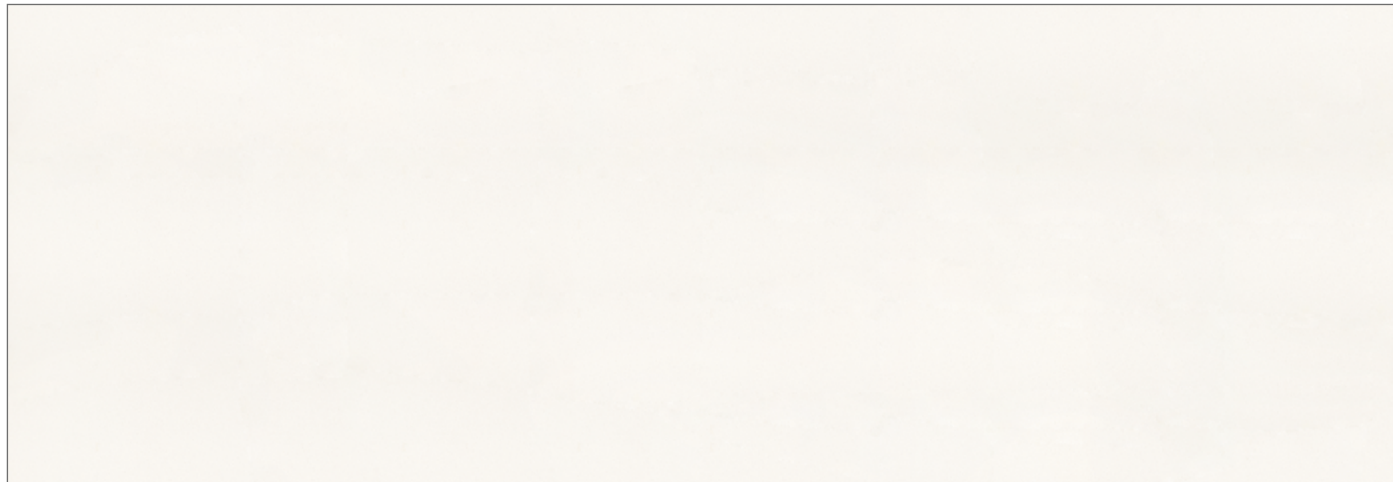
1141 Pure White



2141 Blizzard / Snow

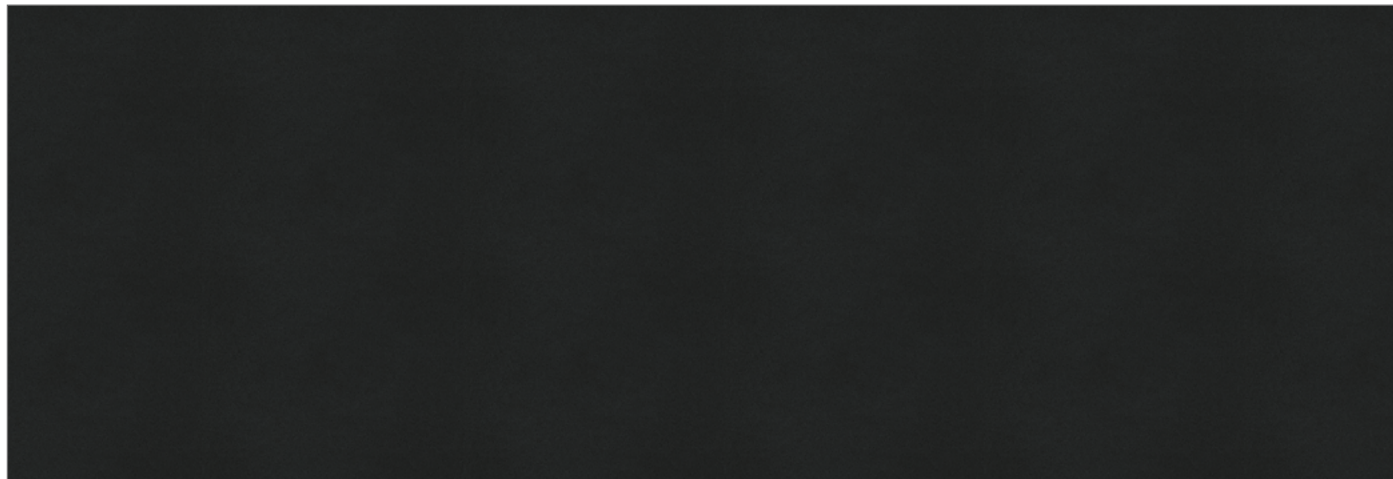
2141 Blizzard / Snow

3050x1440 mm ± 20 mm | polished surface



3100 Jet Black

3050x1440 mm ± 20 mm | polished surface



3100 Jet Black

4030 Oyster

3050x1440 mm ± 20 mm | polished surface



4120 Raven

3050x1440 mm ± 20 mm | polished surface

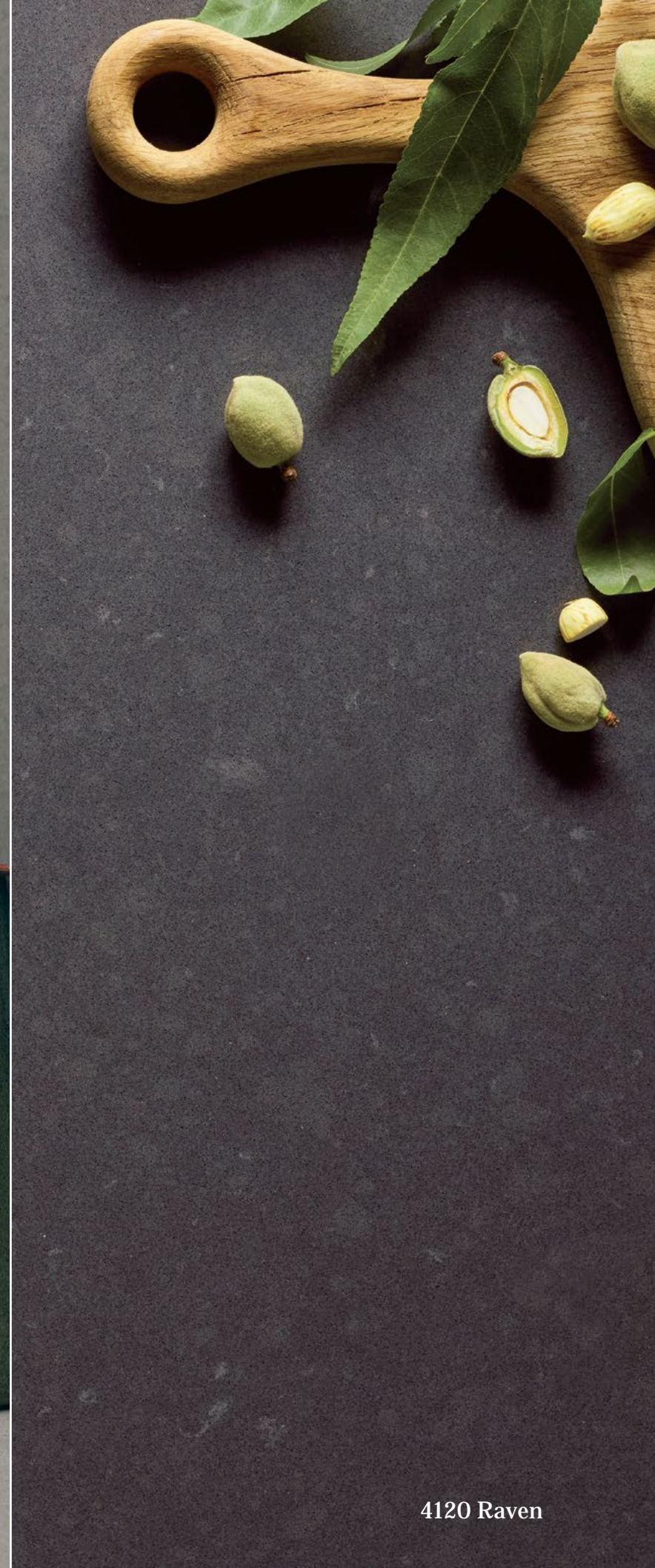


The images of the surfaces are small fragments and do not fully reflect the pattern and palette of the whole slab. You can find the slabs' images on our website.

All slabs of the stock program are available to order in thicknesses of 13 and 30 mm.



4030 Oyster



4120 Raven

4130 Clamshell

3050x1440 mm ± 20 mm | polished surface*



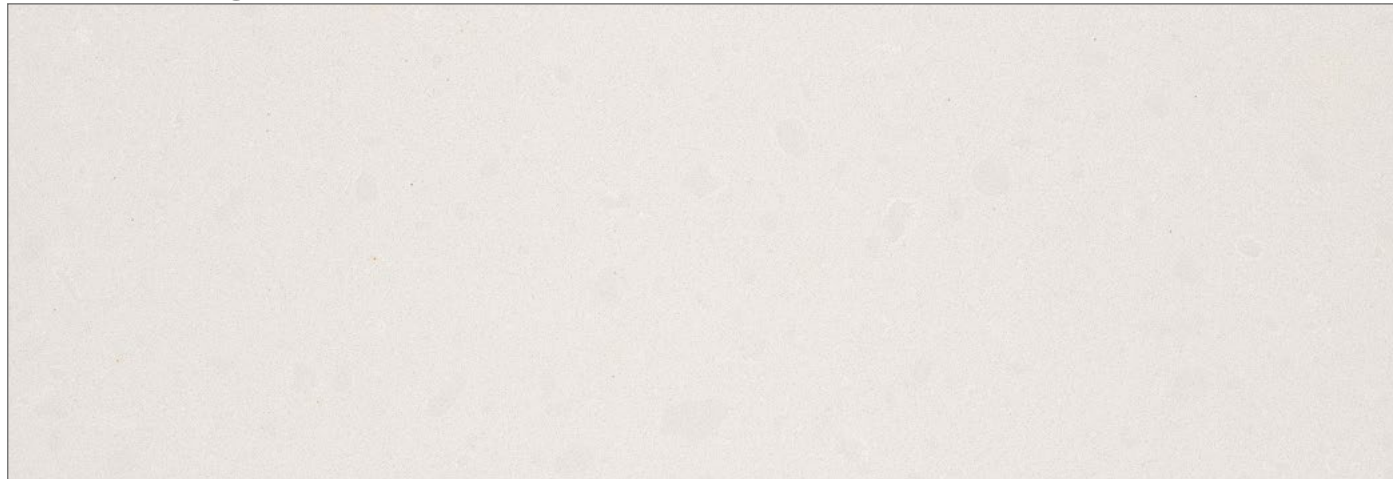
4230 Shitake

3050x1440 mm ± 20 mm | polished surface*

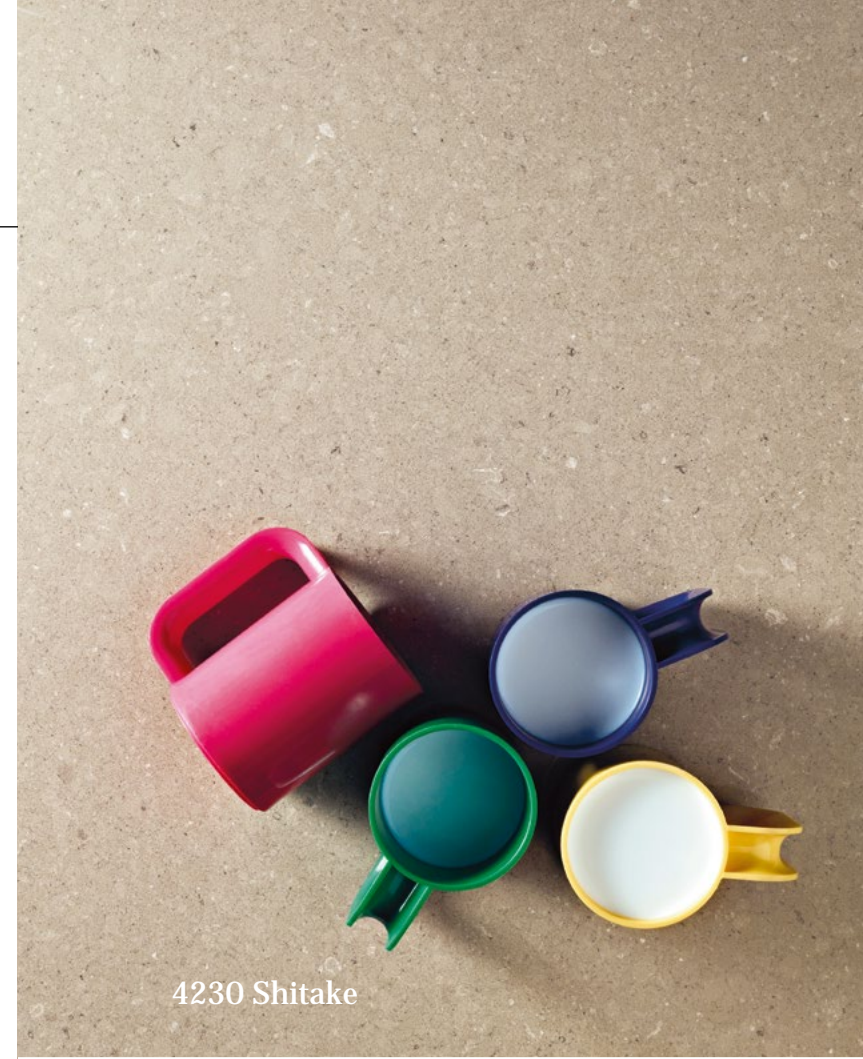


4600 Organic White

3050x1440 mm ± 20 mm | polished surface



* matte surface is available for pre-order



4230 Shitake



4600 Organic White



4130 Clamshell

5000 London Grey

3050x1440 mm ± 20 mm | polished surface*



5000 London Grey



5100 Vanilla Noir

5003 Piatra Grey

3050x1440 mm ± 20 mm | polished surface*



5003 Piatra Grey

5100 Vanilla Noir

3050x1440 mm ± 20 mm | polished surface



* matte surface is available for pre-order

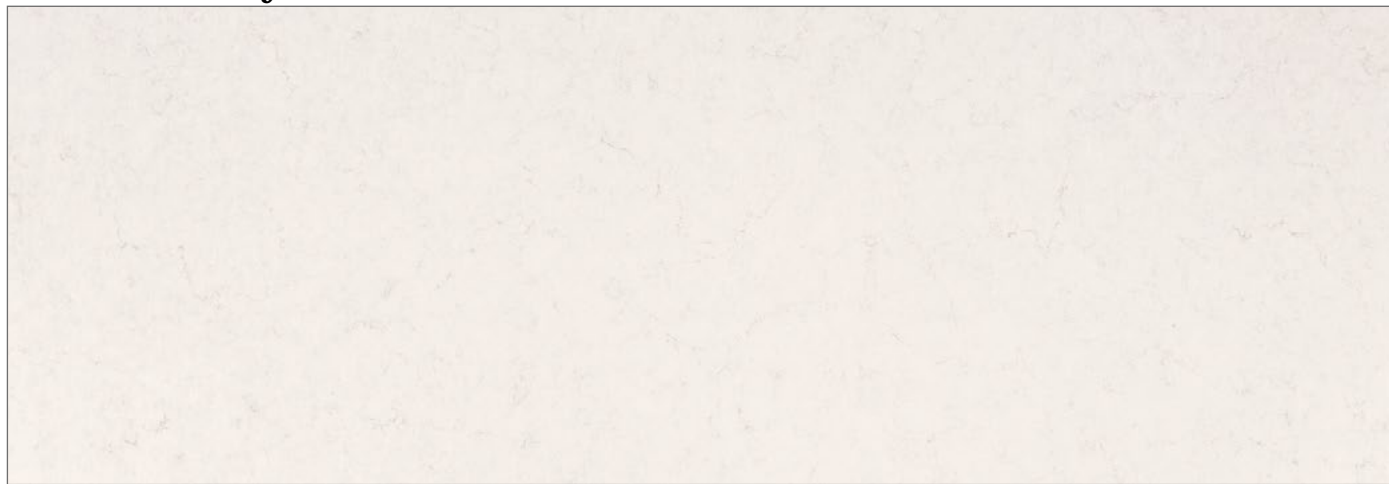
5110 Alpine Mist

3050x1440 mm ± 20 mm | polished surface



5141 Frosty Carrina

3050x1440 mm ± 20 mm | polished surface*

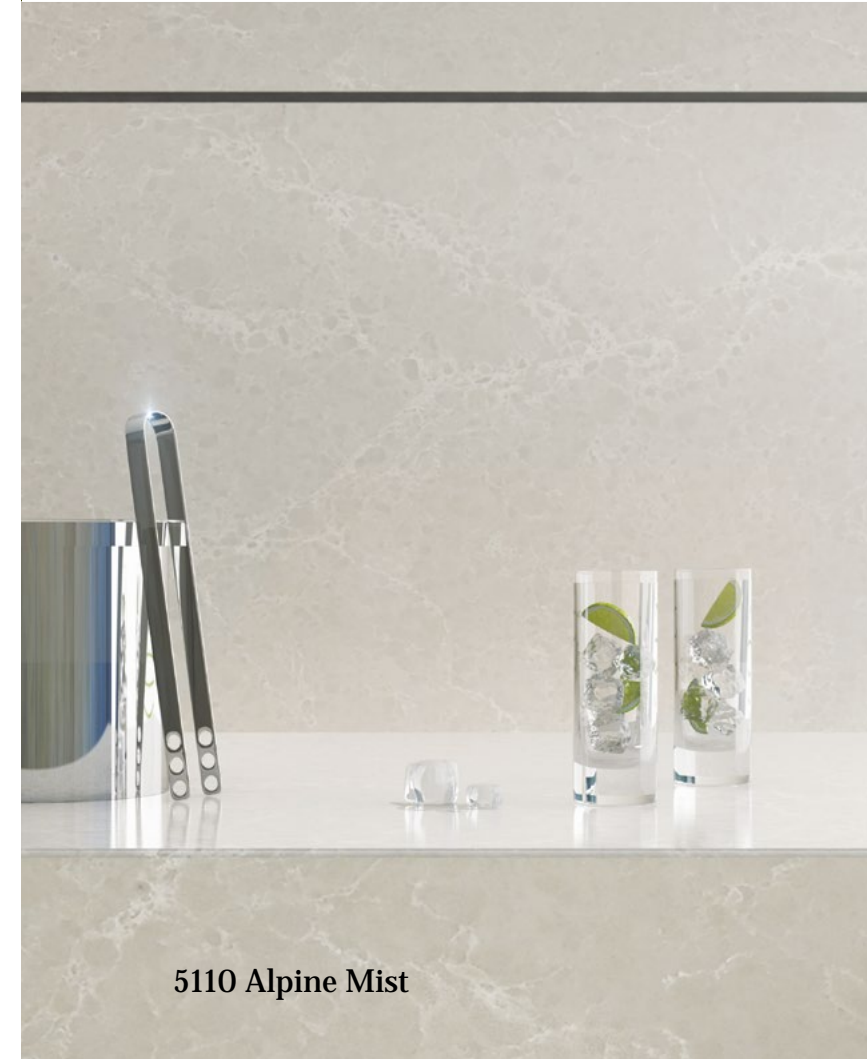


5143 White Attica

3050x1440 mm ± 20 mm | polished surface



5143 White Attica



5110 Alpine Mist



5141 Frosty Carrina

5211 Noble Grey

3050x1440 mm ± 20 mm | polished surface



5212 Taj Royale

3050x1440 mm ± 20 mm | polished surface



5220 Dreamy Marfil

3340x1640 mm ± 20 mm | polished surface



5211 Noble Grey



5212 Taj Royale



5220 Dreamy Marfil

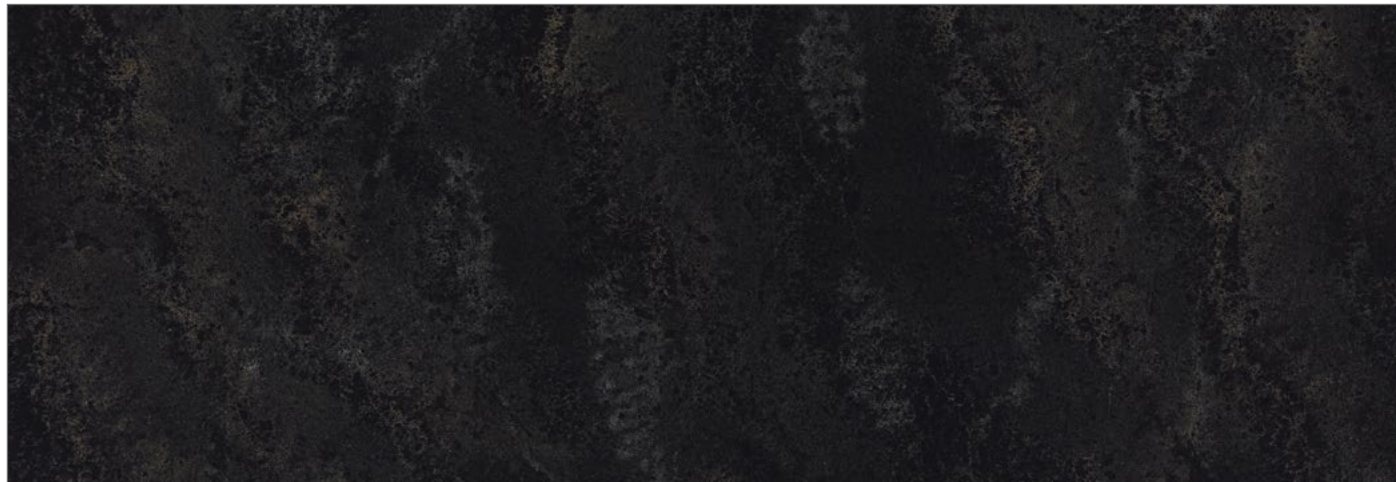
5222 Adamina

3340x1640 mm \pm 20 mm | matte surface



5820 Darcrest

3050x1440 mm \pm 20 mm | matte surface



6003 Coastal Grey

3050x1440 mm \pm 20 mm | polished surface



5820 Darcrest



6003 Coastal Grey



5222 Adamina

6046 Moorland Fog

3050x1440 mm ± 20 mm | polished surface



6131 Bianco Drift

3050x1440 mm ± 20 mm | polished surface



6338 Woodlands

3050x1440 mm ± 20 mm | polished surface



6131 Bianco Drift



6338 Woodlands



6046 Moorland Fog

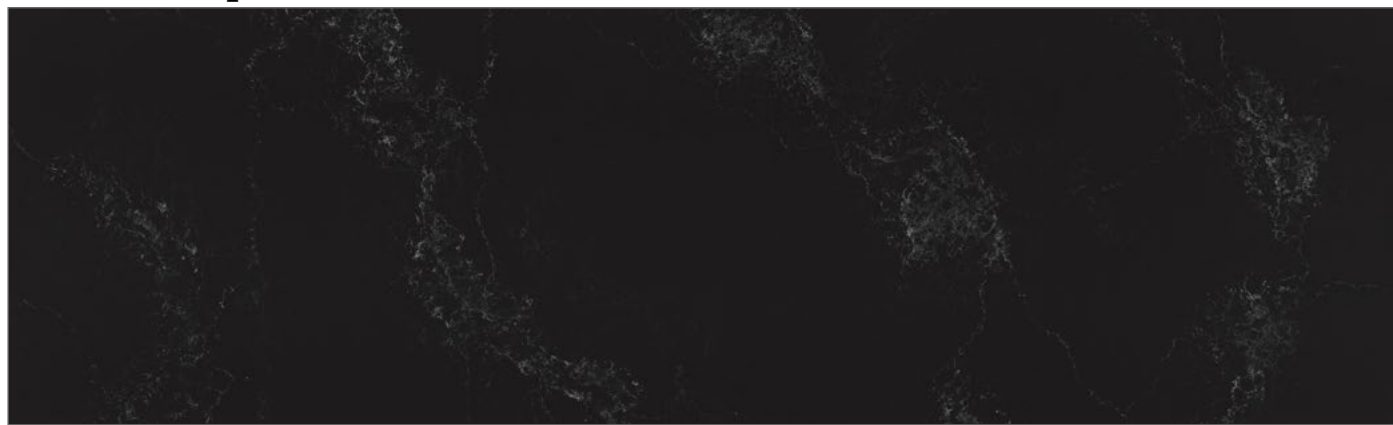
5031 Statuario Maximus

3050x1440 mm ± 20 mm | polished surface*



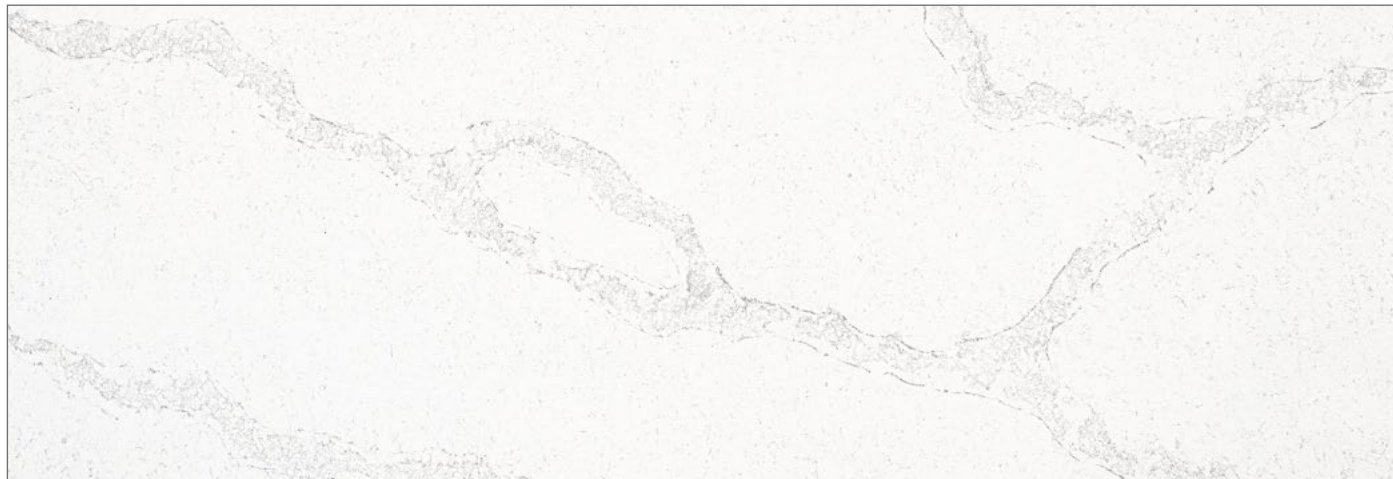
5101 Empire Black

3050x1440 mm ± 20 mm | polished surface



5131 Calacatta Nuvo

3050x1440 mm ± 20 mm | polished surface*



5101 Empire Black



5131 Calacatta Nuvo



5031 Statuario Maximus

* matte surface is available for pre-order

5133 Symphony Grey

3050x1440 mm ± 20 mm | polished surface



5151 Empire White

3340x1640 mm ± 20 mm | polished surface

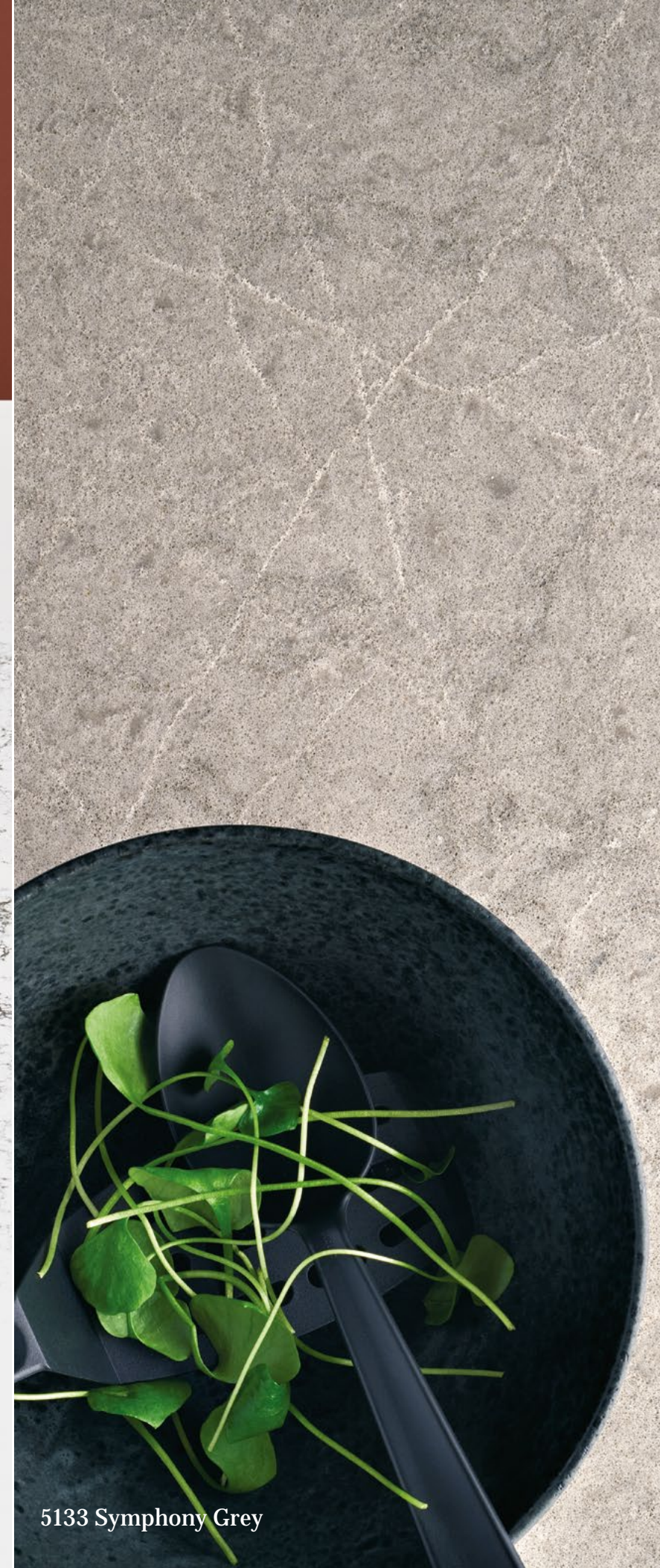


The images of the surfaces are small fragments and do not fully reflect the pattern and palette of the whole slab. You can find the slabs' images on our website.

All slabs of the stock program are available to order in thicknesses of 13 and 30 mm.



5151 Empire White



5133 Symphony Grey

4003 Sleek Concrete

3050x1440 mm ± 20 mm | matte surface



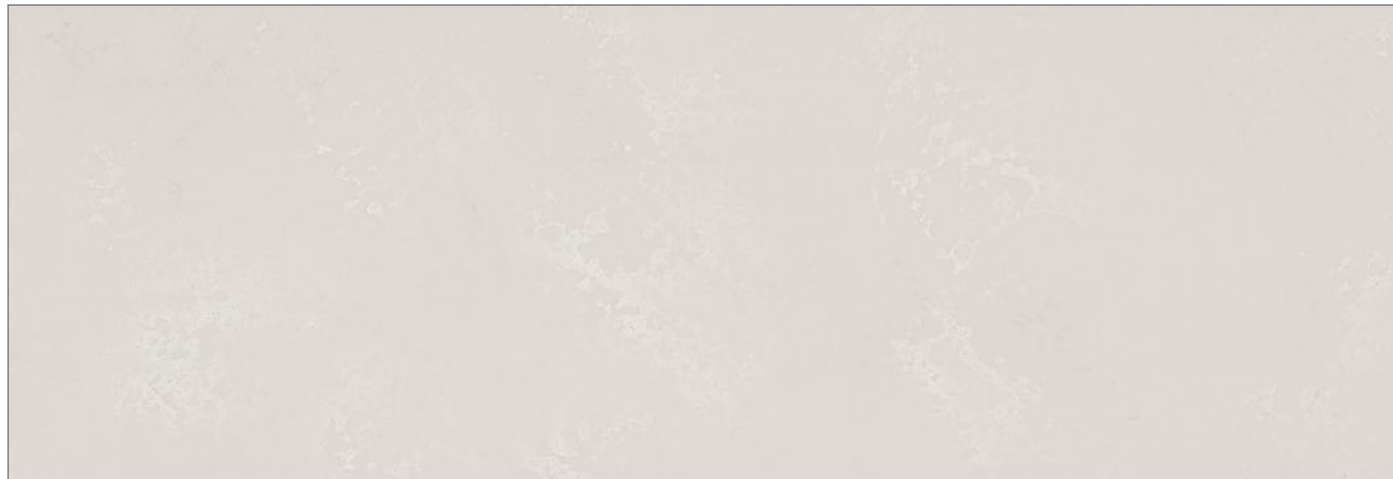
4004 Raw Concrete

3050x1440 mm ± 20 mm | matte surface



4011 Cloudburst Concrete

3340x1640 mm ± 20 mm | textúrovaný matte surface



4011 Cloudburst Concrete



4003 Sleek Concrete

4004 Raw Concrete

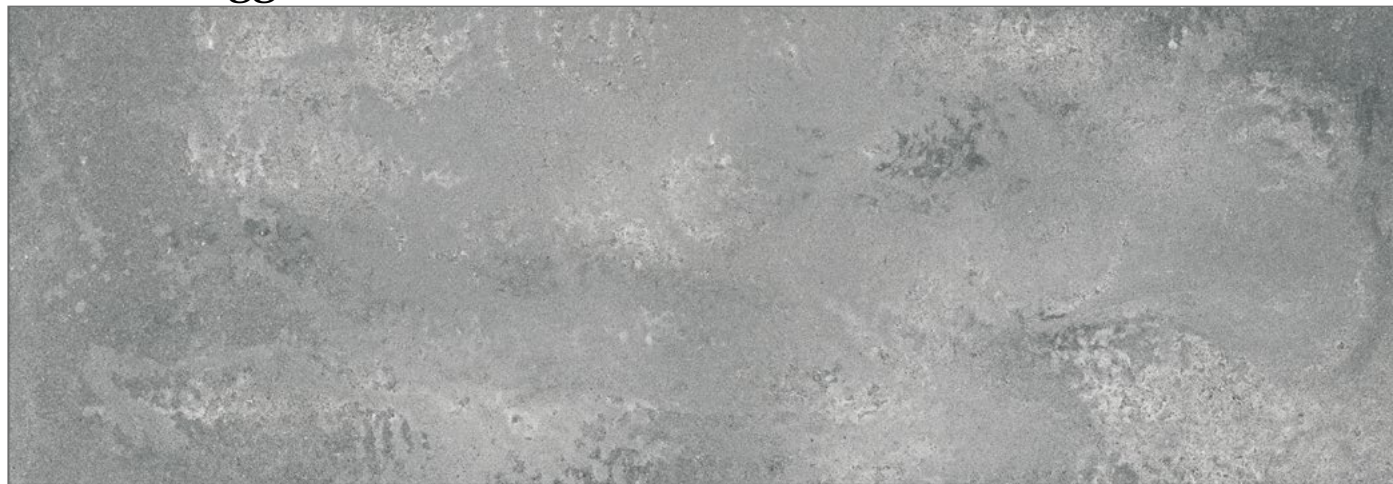
4023 Topus Concrete

3340x1640 mm ± 20 mm | textúrovaný matte surface



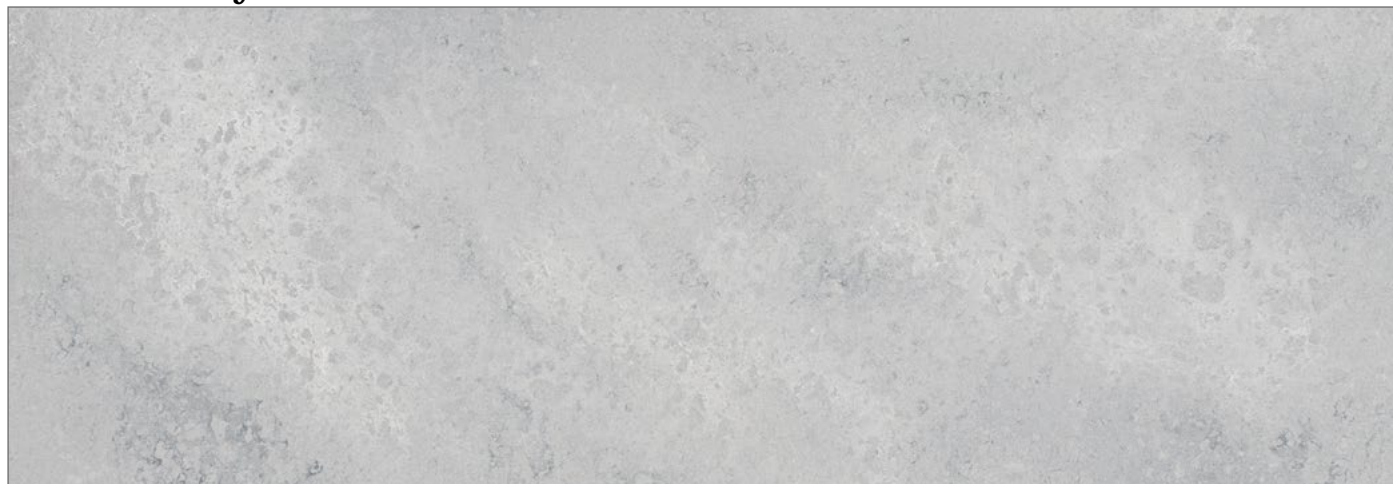
4033 Rugged Concrete

3340x1640 mm ± 20 mm | textúrovaný matte surface



4044 Airy Concrete

3340x1640 mm ± 20 mm | textúrovaný matte surface



4023 Topus Concrete



4044 Airy Concrete



4033 Rugged Concrete

4046 Excava

3340x1640 mm ± 20 mm | textúrovaný matte surface



4046 Excava

5810 Black Tempal

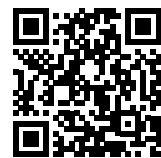
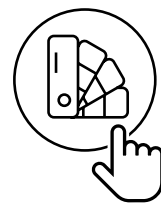
3340x1640 mm ± 20 mm | textúrovaný matte surface



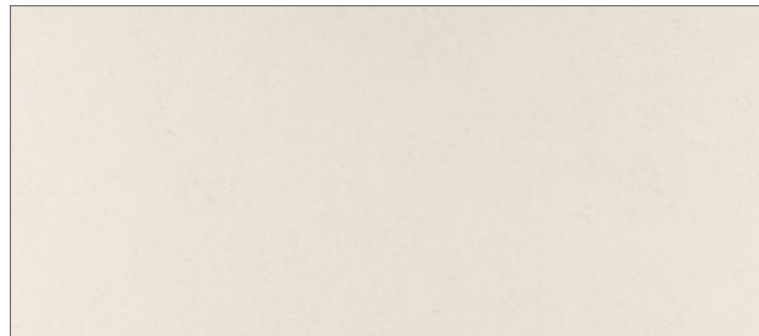
5810 Black Tempal



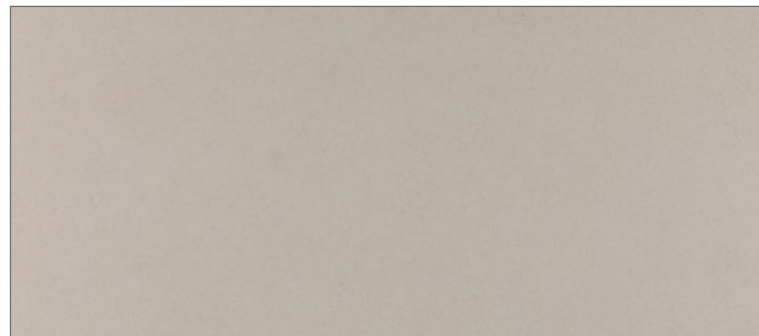
Create your masterpiece with the online designer!



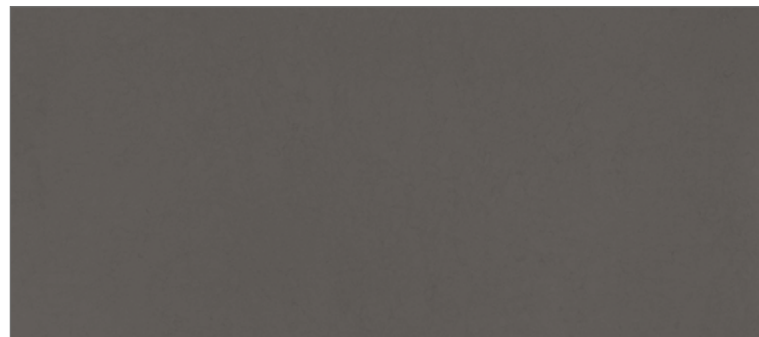
Pre-order



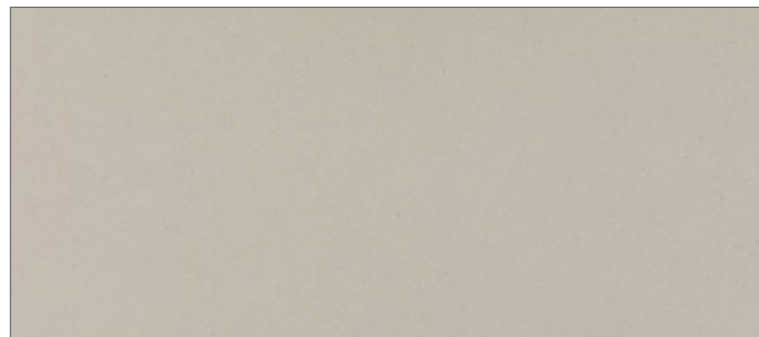
1001 Riverlet



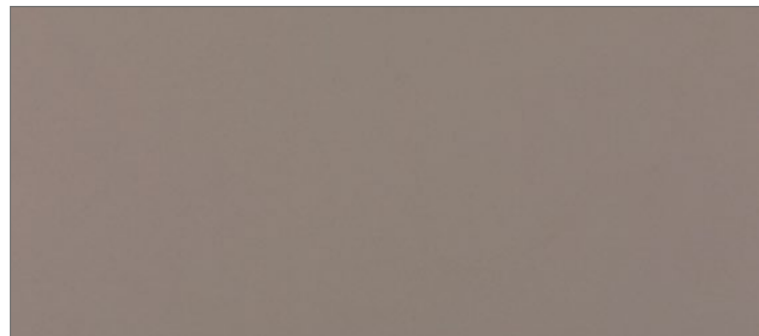
1002 Wyndigo



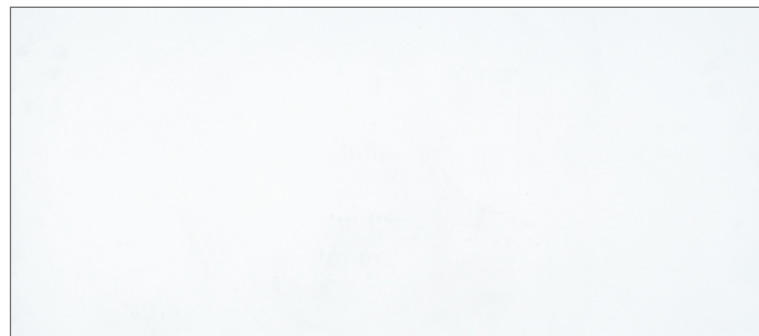
1003 Raindream



1004 Stoneburst



1006 Agger Grey



1111 Vivid White



2003 Concrete

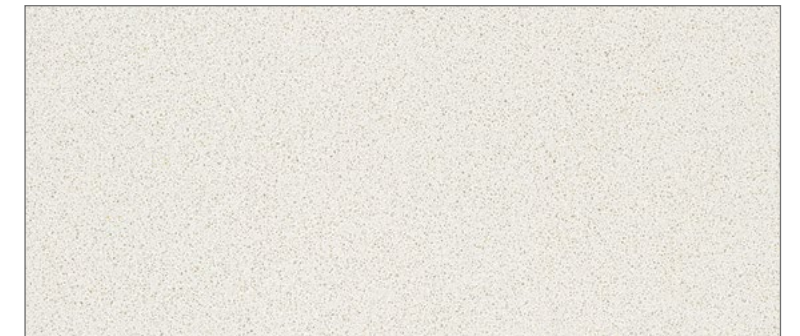


2040 Urban

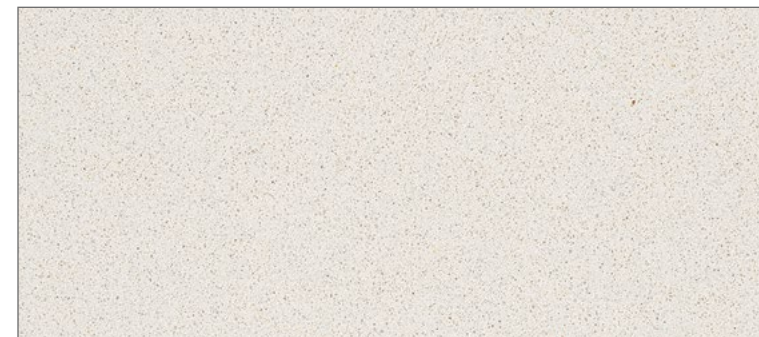
Pre-order



2230 Linen



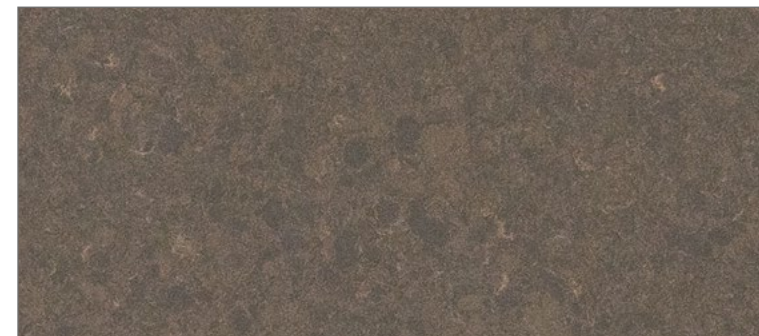
3141 Egg Shell / Osprey



3142 White Shimmer



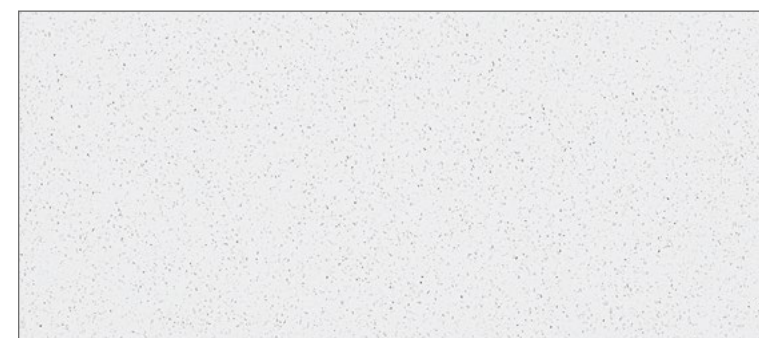
4141 Misty Carrera



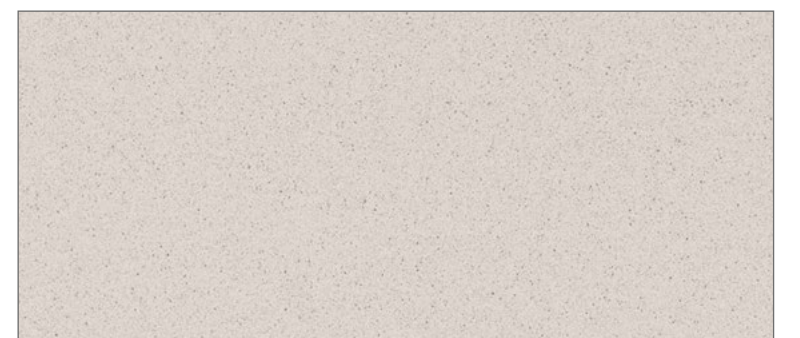
4350 Mink



4601 Frozen Terra



6011 Intense White (Maple)



6041 Nordic Loft

Pre-order



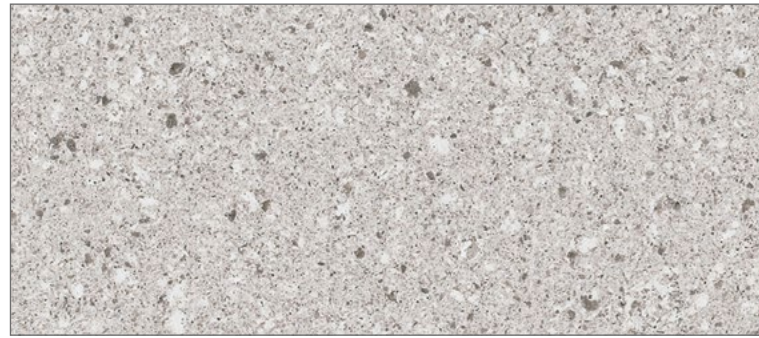
6134 Georgian Bluffs



6141 Ocean Foam



6600 Nougat



6270 Atlantic Salt



9141 Ice Snow



4023 Topus Concrete

Collection Metropolitan

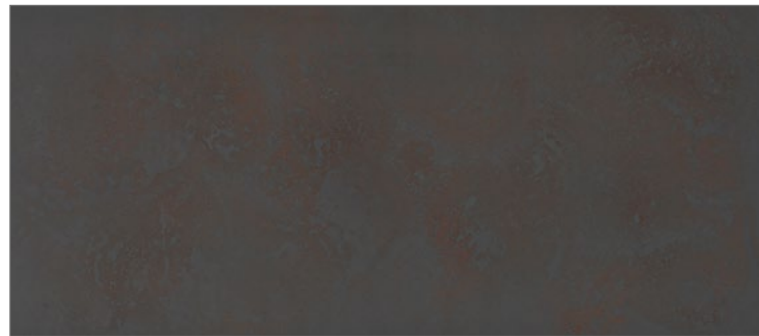
Pre-order



4001 Fresh Concrete



4043 Primordia



4735 Oxidian

Collection Supernatural

Pre-order



5043 Montblanc



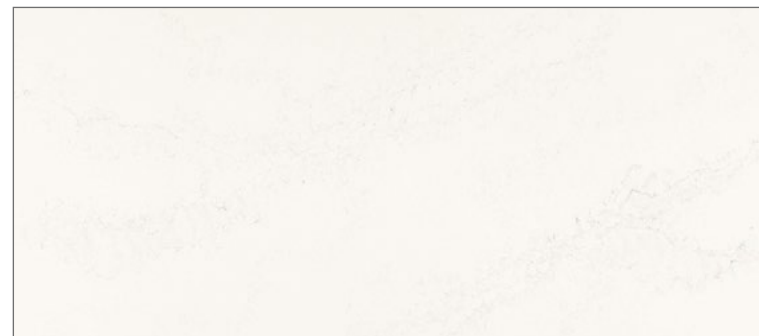
5130 Cosmopolitan White



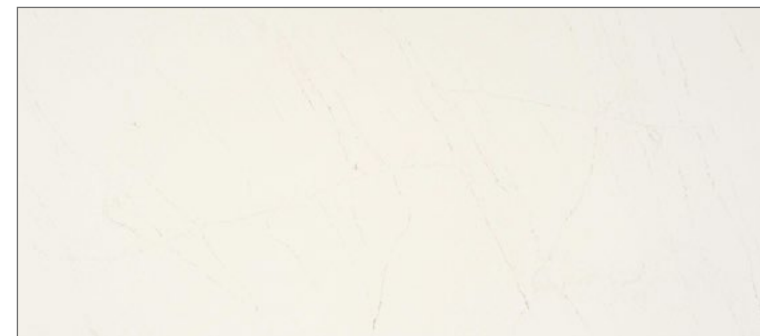
6313 Turbine Grey

Collection Ultra Natural

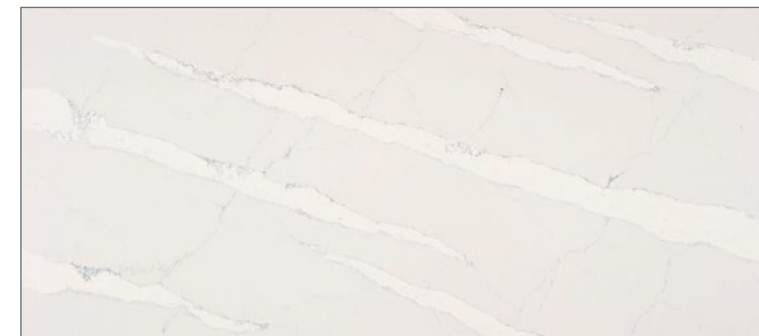
Pre-order



5121 Layalite



5112 Aterra Blanca



5161 Icellion



5171 Arabetto



Why is Caesarstone quartz better than natural stone?

- Quartz surfaces are more durable than natural granite;
- Quartz slabs are water-resistant - if you spill water, tea, coffee or wine, there will be no stains or other consequences (not even from ripe and juicy fruits). You can't say the same about the marble;
- Due to the accuracy of the surface decoration, it is difficult to distinguish Caesarstone from natural stone. The quality of the Caesarstone pattern is consistent from batch to batch, making it easy to join the slabs together when making the final product;
- Apart from easy maintenance, quartz slabs do not require to be treated with special chemicals against mould and mildew;
- Non-radioactive.



THE DURABILITY OF THE QUARTZ SLAB IS UNCOMPARABLE TO THE DURABILITY OF NATURAL STONE

COMPARATIVE CHARACTERISTICS OF CAESARSTONE QUARTZ WITH OTHER MATERIALS

Properties	Caesarstone	Granite / Marble
Resistance to mechanical damage	✓	✓
Resistance to dirt	✓	•
Heat resistance	✓	•
Resistance to household chemicals and acids	✓	•
Ease of care	✓	•
Non-porous structure	✓	•
Resistance to mould and mildew	✓	•
Flexural strength	✓	✗
Colour fastness	✓	✗

✓ Excellent • Good ✗ Bad

AREAS OF USE OF CAESARSTONE QUARTZ



Caesarstone quartz slabs combine high performance with aesthetically pleasing decor and are widely used in interior design.

KITCHEN COUNTERTOPS

Caesarstone countertops are durable, scratch-resistant, hygienic, and easy to clean. Dirt and stains can be easily removed with a cloth and soapy water. The material is environmentally friendly and certified for use in direct contact with food. These properties are the most important when choosing a material for kitchen countertops, bar counters and kitchen islands.

WALL CLADDING IN THE BATHROOM AND SPA

The absence of pores on the surface of the slabs makes the accumulation of bacteria and the mould formation impossible. Therefore, Caesarstone quartz is the best choice for cladding bathrooms, toilets, and spas. Using large slabs instead of traditional ceramic tiles minimises the number of joints and allows you to fully show off the magnificent stone pattern.

FLOORING AND STAIRS

Caesarstone slabs have proven to be robust and durable for floors and stairs in busy public buildings. Caesarstone quartz can be found on the floors of airports, underground stations, and major shopping malls around the world.

DESIGN OF RESTAURANT HALLS, SHOPPING CENTRES AND OFFICE PREMISES

In terms of design, Caesarstone rivals the beauty of natural materials - marble, granite, and travertine. The decor of Caesarstone surfaces is so perfect that the world's leading designers use this stone to bring their best projects to life.



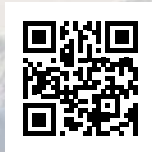
 caesarstone®



ARCHITYPE
more than stone

Architype Central Office
05-555 Tarczyn,
al. Krakowska 64, Grzędy, Poland

info@architype.eu
+48 22 602 20 22



architype.eu